



FURIX

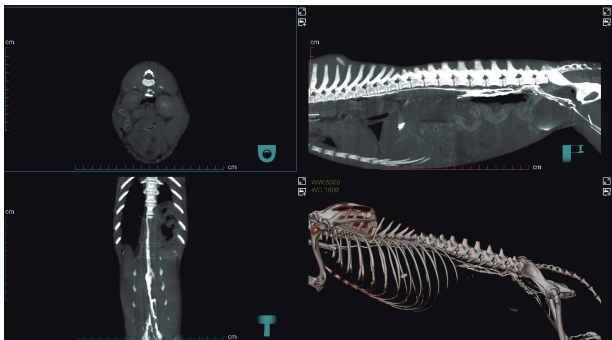
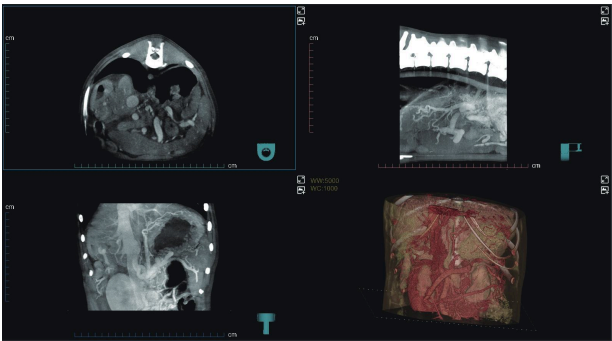
FCBCT 500

Veterinary Cone-Beam Computed Tomography System

Clinical Case

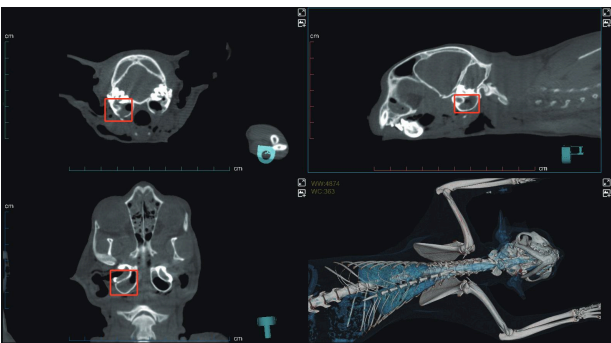
► Acquired Portosystemic Shunt

CT angiography revealed multiple tortuous vessels near the left kidney, esophageal varices, and signs of primary liver disease.



◀ Thoracic Duct Lymphangiography

Used to evaluate congenital/acquired limb edema, chylothorax causes, surgical outcomes, and tumor-related sentinel lymph nodes.



◀ Tympanic Cavity Empyema

CT imaging showed purulent fluid accumulation in the tympanic cavity with surrounding inflammation, correlating with head-shaking and ear discharge.

Clinical Applications

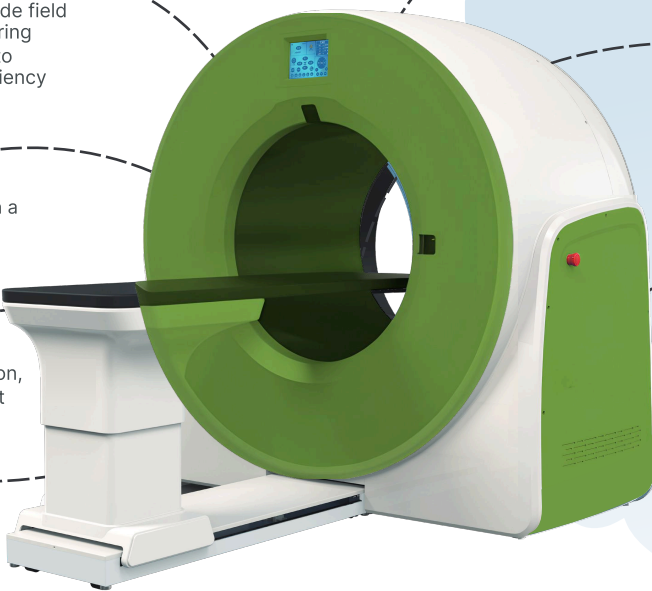
Part	Case
Head & Neck	Cerebral Edema, Brain Hemorrhage, Sinusitis, Otitis, Mastoid Effusion, Nasopharyngeal Stenosis, Tracheal Narrowing, etc.
Dental	Periodontitis, Periapical Abscess, Alveolar Bone Atrophy, Oral Cyst, Tooth Root Resorption, etc.
Thoracic	Pulmonary Edema, Pulmonary Nodules, Interstitial Pneumonia, Pulmonary Inflammation, etc.
Abdomen	Abdominal Wall Inflammation, Peritoneal Fluid Accumulation, Urography, Renal Imaging, Gallstones, Pancreatitis, Kidney Hardening.
Vascular	Abdominal Three-Phase Angiography, Peripheral Artery Thrombosis, Vascular Stenosis, etc.
Spine	Spinal Canal Imaging, Spinal Protrusion, Vertebral Imaging, Spondylosis, Thoracic Spine Fracture, etc.
Tumors	Thyroid Tumors, Nasal Tumors, Ovarian Tumors, Renal Tumors, Adrenal Tumors, etc.
Others	Arthritis, Thoracic Duct Imaging, Peritoneal Calcification, etc.



Shenzhen Falcon and Furix Lifesciences Co. Ltd
Furix Trade Venture Limited (HK)

Address: 6/F MEGA CUBE, WANG KWONG ROAD, KOWLOON, HONG KONG,
Mob:+852 9579 0472 E-mail: sales@myfurix.com

FURIX



Ultra-Fast · Large Field-of-View Mode
Rapid scanning with a wide field of view, efficiently capturing images of large animals to enhance diagnostic efficiency

Intelligent Angiography Solution
Triple-phase contrast imaging in a single scan, accelerating workflow

Advanced Imaging Algorithm
Bone feature enhancement, dynamic soft tissue optimization, and precise diagnostic support

Pioneering CT-AIR
Built-in Respiratory Hold Unit to Reduce Respiratory Artifacts

80cm Large Bore Design
Spacious enough to accommodate large-sized animals

High-Performance Imaging Chain
High-heat-capacity X-ray tube for prolonged intensive scanning; ultra-high-resolution detector for detailed image capture

Carbon Fiber Material Upgrade
Enhanced carbon fiber examination table and gantry for improved stability, ensuring exceptional imaging quality

Intelligent Imaging Software
Tailored for veterinarians, simplifying operations and lowering the barrier to CT adoption in pet care

Image Quality

Weight Range	0-2kg	2-30kg	30-50kg	50-70kg
Imaging Effect	Medium	Excellent	Good	Passable



Four-in-One

Edge Enhancement; Multi-algorithms; Tools: TPLO/VHS/TTA

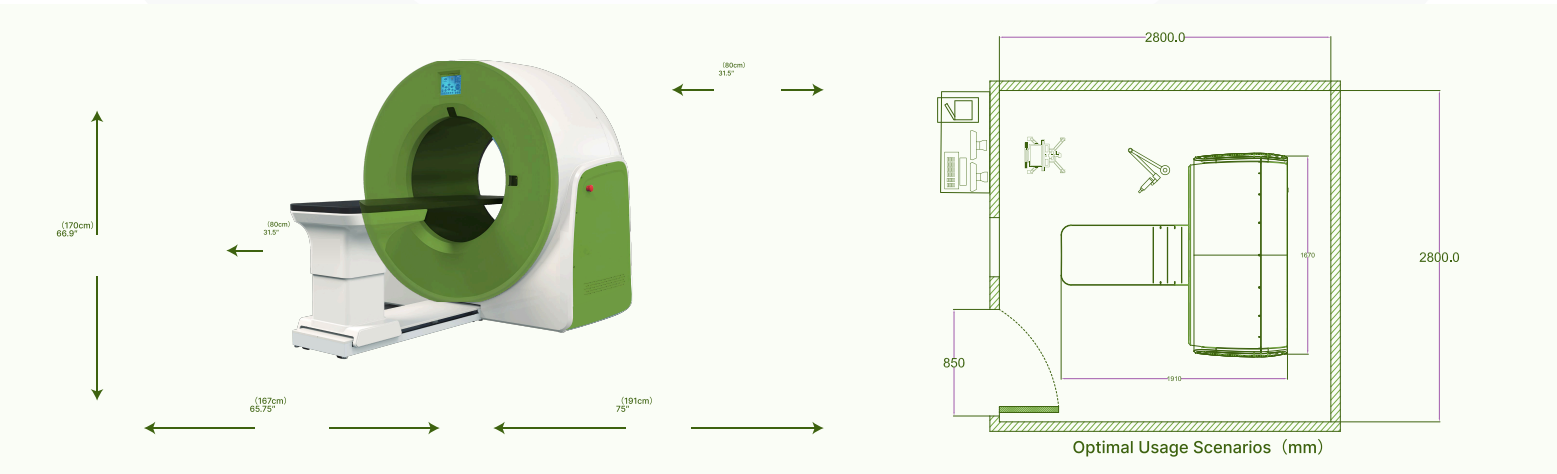
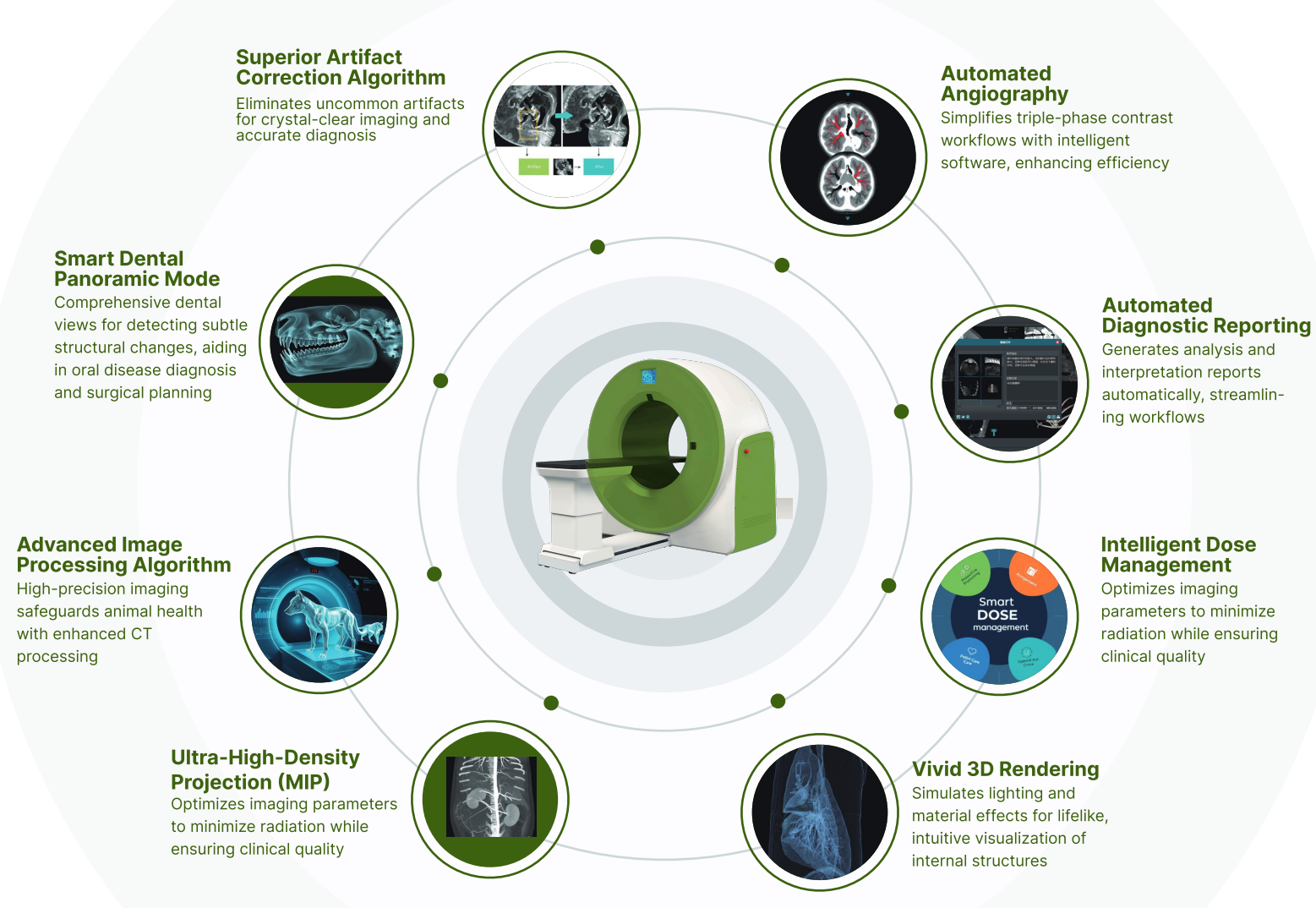
One Scan for Full Arch & Jaw

CT
4.5s Ultra-Fast Scan/0.2mm Ultra-Thin Slice Thickness/42cm×72cm FOV/CT-AIR Breathing Hold

DR

FL
Real-Time Dynamic Enhancement with 1-Minute Continuous Exposure for Precise Lesion Detection

Panoramic Dental



Specifications

Gantry	Structure	O-shaped
	Aperture	31.5"(80cm)
	Nominal Power	15kW
	Input Power	220Vac±10%
	X-ray Tube Heat Capacity	150kJ
Table	Horizontal Movement	28.3"(720mm)
	Vertical Movement	11"(280mm)
Scan Parameters	CT Scan Slices	600-1000
	CT Slice Thickness	0.2-0.72mm
	CT Scan Time	4.5s
	Max.FOV (L x W)	28.3"x16.5" (72cm×42cm)

Technical Requirements

Technical Requirements	Technical Specifications
Voltage	220Vac±10%
Power Resistance	≤0.5Ω
Frequency	50Hz±1Hz
Power Capacity	15kW
Power Cable	6mm²
Lead Shielding	3mm lead equivalent
Temperature	10°C-35°C
Humidity	30%-75%RH(Non-Condensing)
Air Pressure	700-1060hPa

Shenzhen Falcon and Furix Lifesciences Co. Ltd
Furix Trade Venture Limited (HK)

Address: 6/F MEGA CUBE, WANG KWONG ROAD, KOWLOON, HONG KONG,
Mob:+852 9579 0472 E-mail: sales@myfurix.com

FURIX